

# Printer Manual

## PRODUCT MANUAL



## UV Flatbed Printer

### Print Color Description

The color output of this printer is CMYK four-color output, which may slightly deviate from the RGB three primary colors of your screen display. It is a normal phenomenon. If the visual effect is poor, please check whether the color setting is correct, whether the nozzle inkjet is normal, and whether there is color difference on the white background of the material.

### Maintenance method

1. The appearance of the printer becomes dirty: Please wipe off blot and dust on the appearance of the printer with a soft dry cloth. When the stain is serious, wet the cloth with water, wring it out and wipe it.  
Note: Please cut off the power supply of the printer before maintenance. Do not use benzene, diluent, alcohol and other solvents and chemicals, otherwise it may cause deformation or surface damage of the printer shell.
  2. The print head becomes dirty: When the printed text or picture is blurred or defective, it may be due to the dirty print head. The print cleaning program can be executed to clean the print head. Move the print head to the center of the platform, wipe off excess ink with tissue, and print the test line.  
Note: Please do not touch the print head directly with your hands.
  3. Print head damage: If the ink doesn't come out, and still does not work after multiple cleanings, the print head may be damaged. Please send the printer to the dealer or designated repair company. To repair or replace the print head.
  4. In order to maintain the printing quality, the printer needs to be powered on and the print head check or diaphragm printed once a day.
  5. If the printer is not used for fifteen days, you can use moisture liquid to clean the print head.
  6. When printing various objects, please be careful not to hit the nozzle, otherwise it will cause damage to the print head.
  7. Clean and lubricate the machine guide rails regularly, and clean the raster with 95% medical alcohol.
  8. Clean up waste ink regularly. When you find that the waste ink bottle is full of waste ink, please clean it up in time.
  9. If the ink cannot come out even after cleaning the print head or refilling the ink, please check whether the ink absorbing pad is worn and replace it with new accessories
- ⚠ Important Note: Please be sure to use the special ink and other consumables provided by our company, otherwise it will block the nozzle and affect the printing effect.

### Basic printer parameters

Modtel	CH-03 UV flatbed printer
Printhead	Epson Gen 10 XP600
Printing area	20*15cm
Printing height	0-6cm
Printhead number	One
Resolution	1440*2880dpi
Ink color	CMYKWW(Six colors)
Net weight	26kg
Printing method	Intelligent mobile App print
Height measurement	Automatic infrared height measure
Control main-board	Domestic intelligent main-board
Machine size	55*37*37cm

4

# User Manual

This printer utilizes inkjet color printing technology to achieve high-definition and embossed color patterns on various flat surfaces. It supports PS typesetting design and white-color management software, enabling users to quickly print their designed patterns onto various flat objects, such as wood, acrylic, metal plates, ceramics, glass, phone cases, power banks, clothing, wine bottles, and other gifts.

### ☺ Tips:

When printing various flat materials, pay attention to placing the material flat, and the distance between the nozzle and the printing object is between 1-2MM. Please check carefully whether it is flat and clean to avoid damaging the print head.

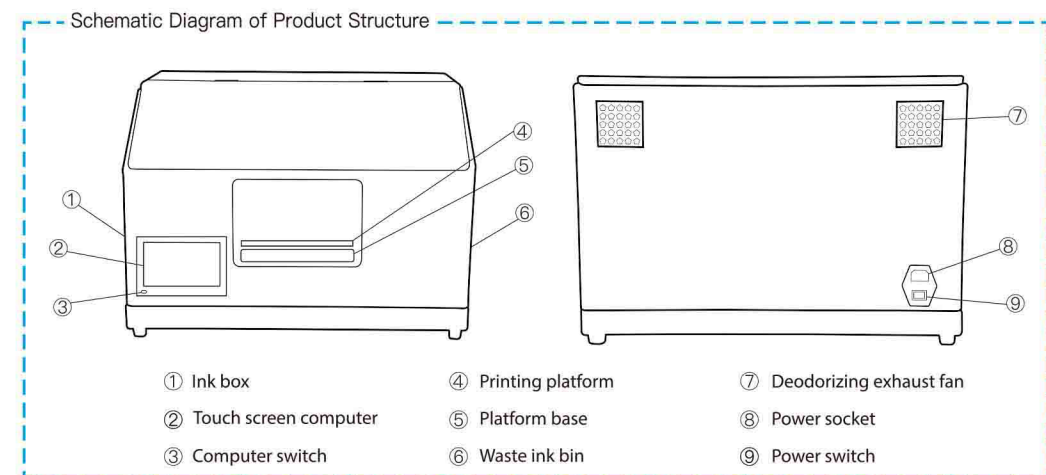


### ⚠ Safety Tips:

1. Please avoid being splashed into the printer by water, coffee, fruit juice and other liquids, otherwise it may lead to fire, electric shock or failure. In case of splashing into the printer, please cut off the power supply of the printer quickly, unplug the power cord from the power outlet and contact the "distribution where this printer was purchased".
2. Please do not disassemble or refit the printer without authorization, otherwise it may lead to fire, electric shock or failure. Please entrust the "distribution where this printer is purchased" for internal inspection, debugging and maintenance of the printer. (It belongs to the failure caused by the user's unauthorized disassembly and modification. Even during the warranty period, the user still needs to pay the repair fee.)
3. Please avoid falling, trampling or causing strong impact on the printer, otherwise it may cause damage. When this happens, if you continue to use it, it may lead to fire or electric shock. In case of damage, please cut off the power supply of the printer quickly, unplug the power cord from the power outlet, and then contact the "distribution point where this printer was purchased".
4. Stop using the printer when it smokes or emits abnormal smell, otherwise it may lead to fire, leakage or failure. At this time, please quickly cut off the power switch, unplug the power cord from the power outlet, and then contact the "distribution where this printer was purchased" for repair. It is very dangerous for users to repair by themselves. Do not repair without authorization.

### ⚠ Precautions:

1. Please do not place the printer in unstable places such as shaking tables or high shelves, otherwise it may overturn, fall and cause injuries.
2. When not in use for a long time, for the sake of safety, please be sure to unplug the power cord from the printer and power socket and keep it properly.
3. Please do not use ink other than our company, otherwise the print head may fail.
4. Please do not touch the print head directly with your fingers.
5. Do not wipe printed articles with alcohol.
6. Please do not use diluent, benzene and other volatile solvents when repairing and maintaining the printer.
7. Avoid direct sunlight, heaters and air conditioning equipment near extreme high temperature or low temperature places, humid and dusty places to use or store.



1

### Precautions

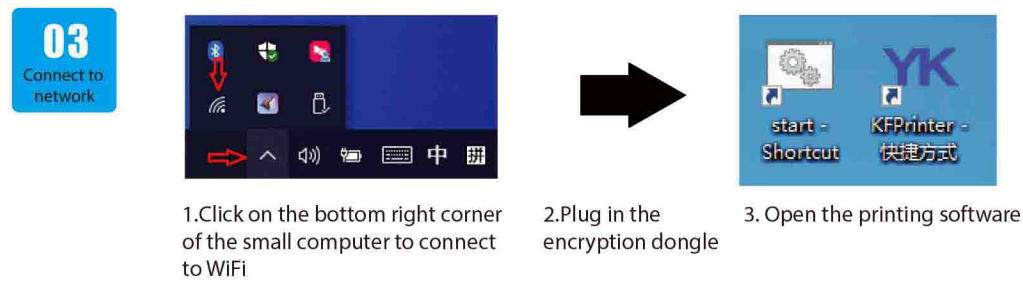
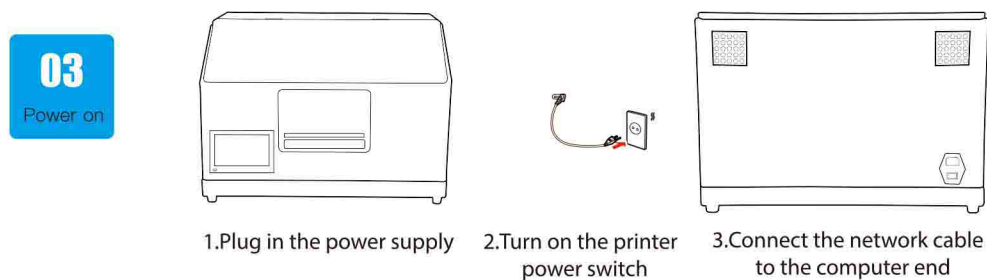
1. To fill ink, please open the side cover and remove the ink bottle for easy pouring.
2. When filling ink, the ink must correspond to the right color of ink bottle on the machine. If you add ink incorrectly, the printing color will be wrong.
3. After filling the ink, the printer cannot be put aside for a long time. Print test line or sheets every day. If it is not used for a long time, the print head will become clogged. If it is not used for more than 15 days, moisturize the nozzle, then shut down and store it in a cool place.
4. When using the printer, it is necessary to regularly check the ink amount in the waste ink bin and clean it up in time.
5. The normal service life of the print head is about half a year. After the expiration, the printing accuracy will decrease, the test line is incomplete, and the color is not equal. The print head needs to be replaced.
6. When the printer needs to be transported, please use the original packaging box and clean the ink in the waste ink bottle and ink absorbing pad first. Seal the ink bottle, fix the print head, and then pack it.
7. Please do not use ink from other manufacturers privately, as it may result in color distortion, clogged printhead, and poor printing effects.
8. When installing a new machine, please contact the manufacturer promptly to avoid any unnecessary troubles.
9. The printhead, continuous ink supply system, cleaning unit, ink troubles, and ink bag are consumable items and are not covered under warranty

5

### Preparation

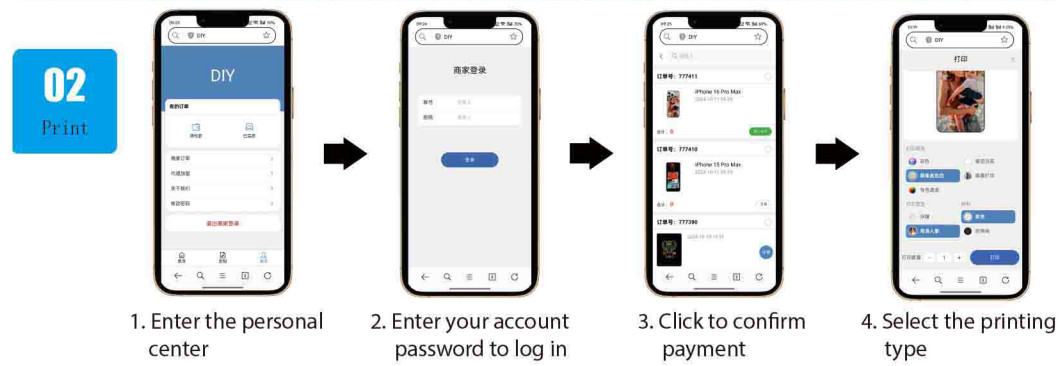
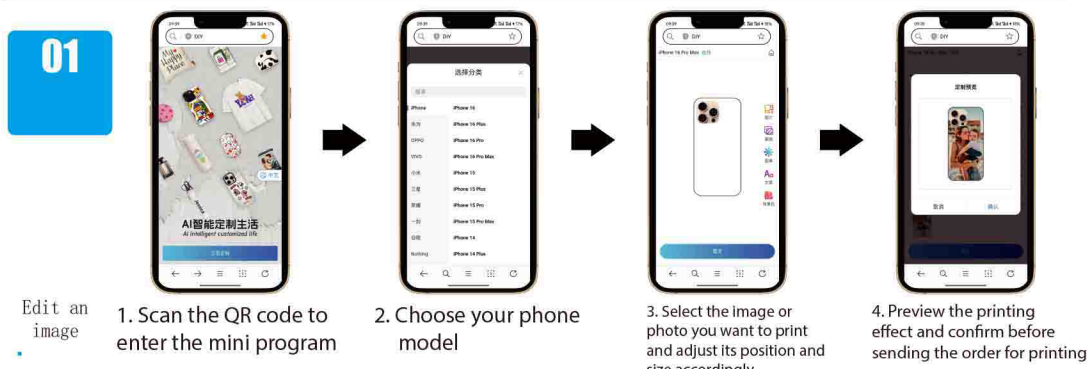
Please refer to the table below for details of the items in the package. Please check carefully. If there are any omissions, please contact the distributor who sell this printer.

Note: Some small items such as syringes, cleaning liquid, ink, etc. may be attached to the printer. This printer will be configured according to the delivery needs of the printer. If you have any questions, please contact the manufacturer or supplier, customer service personnel, etc. immediately.



2

### Printing



### Common Troubles and Solutions of Printing

1. There is color difference or lack of color between the printed image and the computer display  
A. The printing parameter setting and mode selection are inconsistent with the file type. It is recommended to set the printing parameter and printing mode according to the corresponding software tutorial.  
B. Since the display and printer use different technologies to express colors, the display adopts RGB mode and the printer adopts CMYK mode, so the actual printed color cannot completely match the color expressed on the display.  
C. The print head is dirty, individual spray holes do not produce ink. Perform print head cleaning from the printer property options.
2. The test line is still incomplete after cleaning the print head  
A. When the printer fills ink for the first time, the print head needs to be cleaned and filled with ink before printing test lines.  
B. This machine uses continuous ink cartridges. When the test lines are incomplete, the print head can be cleaned and more colorful pictures can be printed.

3

## Warranty Card

### Dear User

Thank you for purchasing. In order to better serve you, please read carefully, fill in and properly keep this warranty card after purchasing the printers.

User Name		Contact Person	
Date of Purchase		Tel	
Printer Name		Printer Model	
User Address			
Order Number			
Maintenance Record	Date	Reason and Treatment	

### Warranty Description

If the printer has quality problems and needs maintenance, please send this warranty card together with the purchased printers to our company for after-sales maintenance

### Precautions

1. From the first day when you sign for the purchase of this printer, if there is a non-human quality problem within two year after installation and use according to the instructions, we will provide free maintenance, and a maintenance fee will be charged for maintenance after two year.
2. For quality problems not caused by the quality of the Company's printers, such as damage caused by improper use, improper storage, unauthorized dismantling of the printer, etc., the Company shall charge maintenance costs.
3. Nozzles, ink capsules and cleaning units are not covered by warranty.

**Certificate of Conformity**  
After inspection, this printer meets the standard and leaves the factory